

# Læsebagsmæksprofiler og Alu. lister / Special profiles for tailboard and alu. profiles

## Læsebagsmæksprofiler

Vare nr.	Mål mm	Fod mm	Rulle længde meter
30.330S			
30.331	39 x 48,5	23,5 x 2,5	25
30.331/1500	39 x 48,5	23,5 x 2,5	1,5
30.331/1850	39 x 48,5	23,5 x 2,5	1,85
30.331/2200	39 x 48,5	23,5 x 2,5	2,2
30.331/2600	39 x 48,5	23,5 x 2,5	2,6

### Læsebagsmæksprofil m. læbe Hårdhed shore 65° EPDM

Rubber profile with lip for loading tailboard  
Shore 65° EPDM

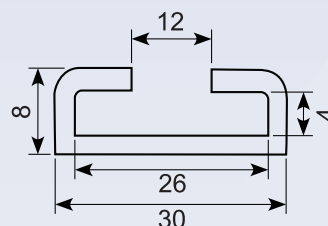


### 41.671

#### Aluminiumsfodliste Aluminium skirting board



A: 8 mm  
B: 30 mm  
C: 26 mm  
D: 4 mm  
E: 12 mm  
Længde/Length:  
1 meter/metre



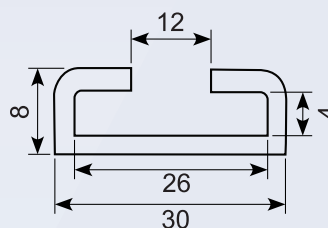
### 41.672A

#### Aluliste til f.eks. bagsmæksprofil

Aluminium skirting board



A: 8 mm  
B: 30 mm  
C: 26 mm  
D: 4 mm  
E: 12 mm  
Længde/Length:  
2 meter/metre



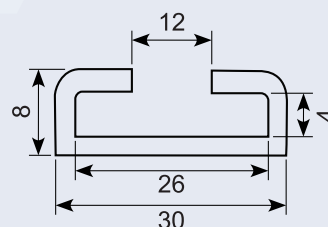
### 41.675A

#### Aluliste til f.eks. bagsmæksprofil

Aluminium skirting board



A: 8 mm  
B: 30 mm  
C: 26 mm  
D: 4 mm  
E: 12 mm  
Længde/Length:  
5,2 meter/metre



### 30.7649

#### D-tætningsprofil Hårdhed shore 60°, EPDM

D-seal  
Shore 60°, EPDM



### 30.7933

#### H-profil Hårdhed shore 70°, EPDM

H-profile  
Shore 70°, EPDM



Rullelængde 25  
meter

Roll length 25 metre

30.8469



**Læssebagsmæksprofil med vandnæse**  
**Hårdhed shore 67°, EPDM**

Rullelængde 8  
meter

Profile with water lip for loading tailboard  
Shore 67°, EPDM

Roll length 8 metre

30.6648



**Skørteprofil**  
**Hårdhed shore 60°/65°, PVC**  
**Sort**

Rubber profile  
Shore 60°/65°, PVC  
Black

30.2151



**Skørteprofi i ruller a 14 meter**  
**Hvid PVC**

PVC profile, white in 14 meter rolls

30.2566



**Skørteprofil, 64 meter**  
**Hårdhed shore 60°/65°, PVC**  
**Sort**

PVC profile, 64 meter, black  
Shore 60°/65°

30.314S



**Gummiprofil**  
**Hårdhed shore 60°/65°, EPDM**

Rubber profile  
Shore 60°/65°, EPDM

30.333



**L-profil**  
**Hårdhed shore 75°, EPDM**  
**Rullelængde 2,6 meter**

L-profile  
Shore 75°, EPDM  
Length 2,6 metres

41.333S



**Stålprofil til montering af gummiprofil**  
**30.333**

Steel profile for mounting of rubber profile  
30.333

Længde: 2,6 meter

Length: 2,6 metre

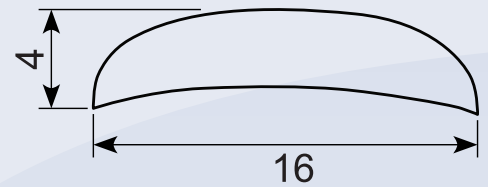
41.116

**Aluminiumsprofil**

Aluminium profile



A: 4 mm  
B: 16 mm  
Længde: 6 meter  
Length: 6 metre



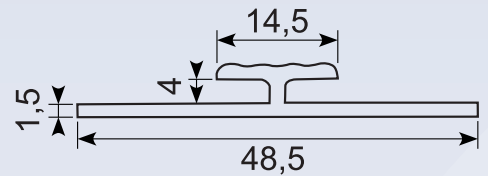
41.3720058

**Aluprofil, samleliste til 4 mm plade**

Edging section, aluminium for 4 mm plate



A: 1,5 mm  
B: 48,5 mm  
C: 4 mm  
D: 14,5 mm  
Længde/Length: 5 meter/metre



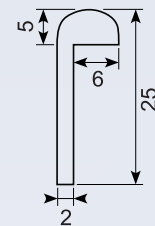
41.372P

**Aluminiumsliste, poleret.**

Edging section, polished



A: 25 mm  
B: 2 mm  
C: 5 mm  
D: 6 mm  
Længde/Length: 5 meter/metre



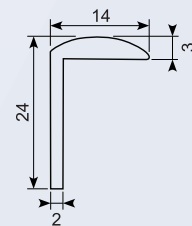
41.376P

**Aluminiumsliste, poleret.**

Edging section, polished



A: 24 mm  
B: 14 mm  
C: 2 mm  
D: 3 mm  
Længde/Length: 5 meter/metre



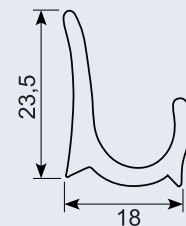
41.406

**Vandrede, upoleret**

Drip moulding, unpolished



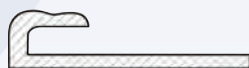
A: 23,5 mm  
B: 18 mm  
Længde/Length: 5 meter/metre



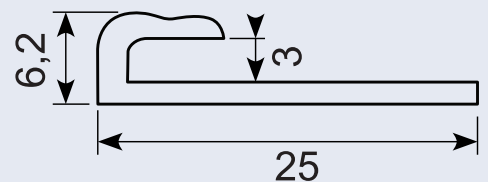
41.611P

**Aluminiumsliste, poleret**

Edging section, polished



A: 6,2 mm  
B: 25 mm  
Spor/Track: 3 mm  
Længde/Length: 5 meter/metre



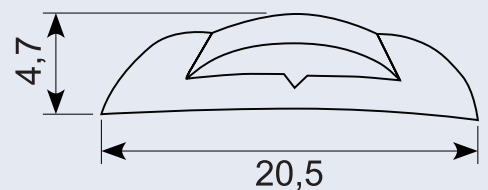
42.420

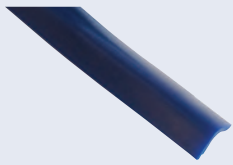
**Pynteliste, excl. indlæg**

Trim strip, exclusive insertion



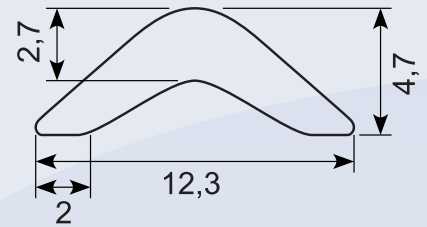
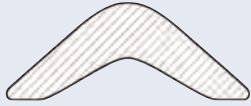
A: 4,7 mm  
B: 20,5 mm  
Længde/Length: 5 meter/metre



**45.208****Indlægsliste, blå**

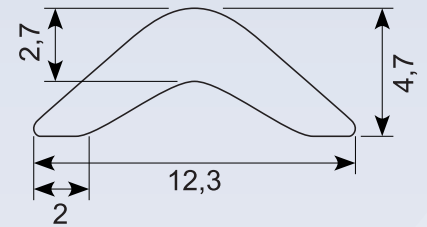
Insertion, blue

A: 2,7 mm  
 B: 12,3 mm  
 C: 4,7 mm  
 D: 2 mm

**45.205S****Indlægsliste, alu/sølvgrå, mat**

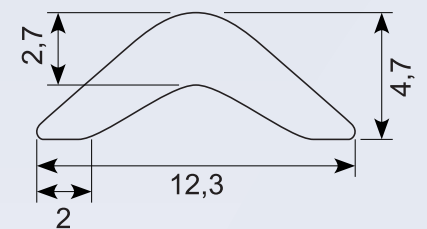
Insertion, silvery/alu, dull finish

A: 2,7 mm  
 B: 12,3 mm  
 C: 4,7 mm  
 D: 2 mm

**45.209B****Indlægsliste, sort**

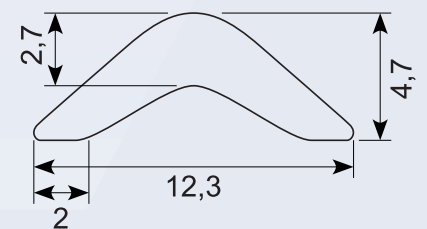
Insertion, black

A: 2,7 mm  
 B: 12,3 mm  
 C: 4,7 mm  
 D: 2 mm

**45.201B****Indlægsliste, sølvgrå**

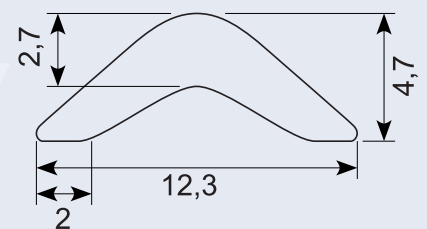
Insertion, silvery

A: 2,7 mm  
 B: 12,3 mm  
 C: 4,7 mm  
 D: 2 mm

**45.205B****Indlægsliste, rød**

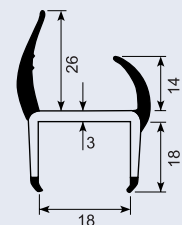
Insertion, red

A: 2,7 mm  
 B: 12,3 mm  
 C: 4,7 mm  
 D: 2 mm

**50.083030****Bagdørsprofil, co-extruderet, hvid/sort med 4 bløde læber, længde 5 meter**

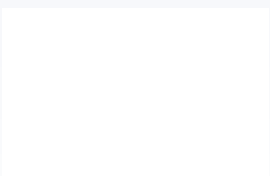
Rear door profile, co-extruded, black/white with 4 soft lips, length of 5 metre

A: 18 mm  
 B: 18 mm  
 C: 14 mm  
 D: 26 mm  
 E: 3 mm

**50.083033****Co-extruderet 19 mm  
Farve: lysegrå/sorte læber**

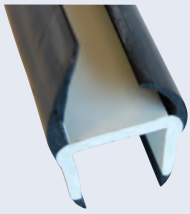
Længde: 5 meter

Co-extruded profile 19 mm, light grey/black lips



Godt køb / best buy

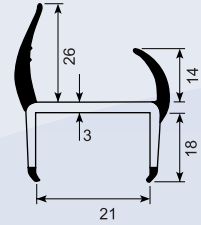
50.083040



**Bagdørsprofil, co-extruderet, hvid/sort med 4 bløde læber, længde 5 meter**

Rear door profile, co-extruded, white/black with 4 soft lips, length of 5 metre

- A: 18 mm
- B: 21 mm
- C: 14 mm
- D: 26 mm
- E: 3 mm



50.083050

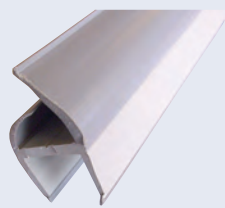
**Co-extruderet 30 mm  
Farve: hvid/sorte læber**

Længde: 5 meter



Co-extruded profile 30 mm, white/black lips

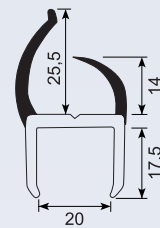
54.710700



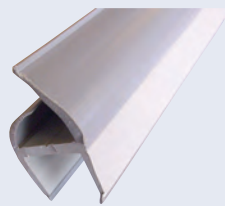
**Co-extruderet profil 20 mm, med lysegrå/grå læber, længde 3 meter**

Co-extruded profile 20 mm, with light grey/grey lips, length of 3 metre

- A: 17,5 mm
- B: 20 mm
- C: 14 mm
- D: 25,5 mm



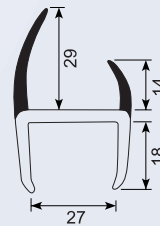
54.710720



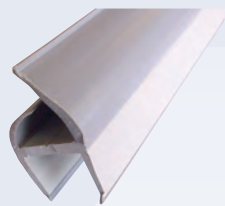
**Co-extruderet profil 25 mm, lysegrå/grå læber, længde 3 meter**

Co-extruded profile 25 mm, light grey/grey lips, length of 3 metre

- A: 18 mm
- B: 27 mm
- C: 14 mm
- D: 29 mm



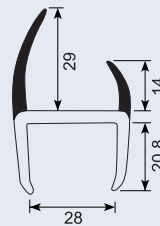
54.710730



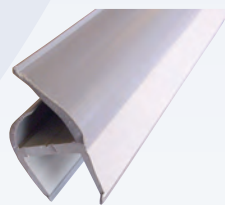
**Co-extruderet profil 30 mm, lysegrå/grå læber, længde 3 meter**

Co-extruded profile 30 mm, light grey/grey lips, length of 3 metre

- A: 20,8 mm
- B: 28 mm
- C: 14 mm
- D: 29 mm



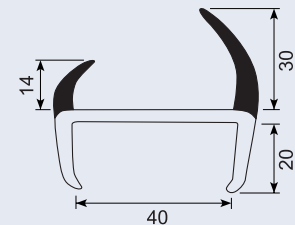
54.710750



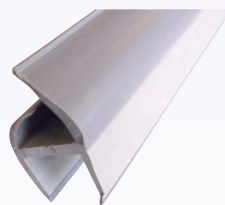
**Co-extruderet profil 40 mm, lysegrå/grå læber, længde 3 meter**

Co-extruded profile 40 mm, light grey/grey lips, length of 3 metre

- A: 20 mm
- B: 40 mm
- C: 30 mm
- D: 14 mm



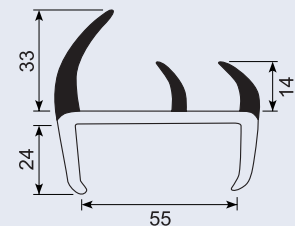
54.710770



**Co-extruderet profil 55 mm, lysegrå/grå læber, længde 3 meter**

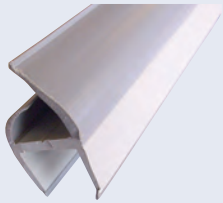
Co-extruded profile 55 mm, light grey/grey lips, length of 3 metre

- A: 24 mm
- B: 55 mm
- C: 33 mm
- D: 14 mm



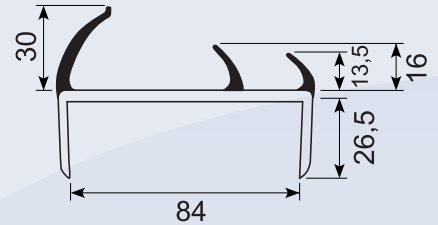
Godt køb / best buy

## 54.710780

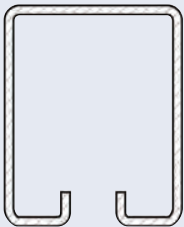


**Co-extruderet profil 85 mm, lysegrå/grå læber, længde 3 meter**  
Co-extruded profile 85 mm, light grey/grey lips, length of 3 metre

A: 26,5 mm  
B: 84 mm  
C: 30 mm  
D: 13,5 mm  
E: 16 mm



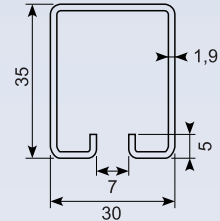
## 50.020010



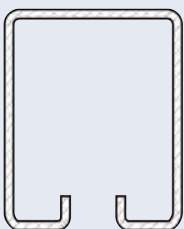
**Galvaniseret C-skinne**

C-rail, zinc-plated

A: 35 mm  
B: 30 mm  
C: 7 mm  
D: 5 mm  
E: 1,9 mm  
Længde: 6 meter



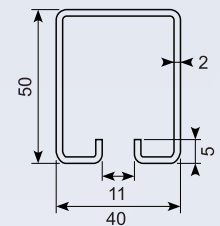
## 50.020020



**Galvaniseret C-skinne**

C-rail, zinc-plated

A: 50 mm  
B: 40 mm  
C: 11 mm  
D: 5 mm  
E: 2 mm  
Længde: 6 meter



## 50.022010



**Ø44 mm jernrulle med leje.**  
Til skinne 50.020020

Steel roller with bearing  
For rail 50.020020

## 50.022020



**Ø30 mm jernrulle med leje.**  
Til skinne 50.020010

Steel roller with bearing  
For rail 50.020010

## 50.024020



**Ø30 mm jernrulle med leje.**  
Til skinne 50.020010

Steel roller with bearing  
For rail 50.020010

## 50.024050



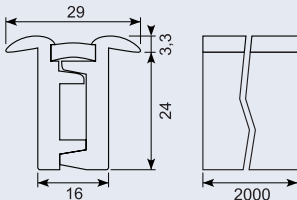
**Ø44 mm jernrulle med leje.**  
Til skinne 50.020020

Steel roller with bearing.  
For rail 50.020020

Godt køb / best buy

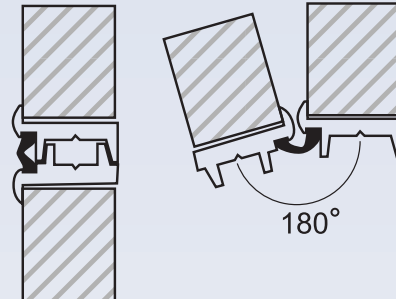
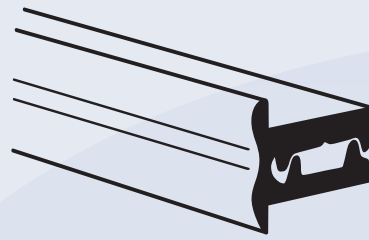
Centraflex

Vare nr.	A	B	C	D	L
	mm	mm	mm	mm	mm
20.6020	29	3,3	24	16	2000
20.6025	29	3,3	24	16	2500
20.6120	29	3,3	24	16	2000
20.6125	29	3,3	24	16	2500
20.6130	29	3,3	24	16	3000



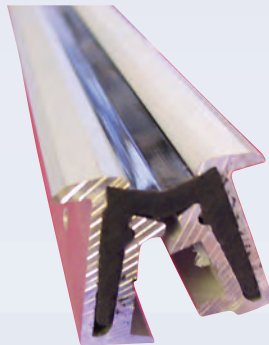
**Centraflex. Vandtæt stanghængsel med PU-kerne og kunststof flanger. Tillader 180 gr. åbning. Stor styrke og høj elasticitet. Sort finish.**

Weather-proof continuous hinge with PU-core and synthetic flanges. 165° opening, 28 mm face. High strength and excellent flexibility. Black finish.



Poly-all

Vare nr.	B	L
	mm	mm
54.261100	24	2400
54.261120	24	2700
54.261130	24	4000
54.261700	29	2400
54.261720	29	2700
54.261740	29	3000
54.261780	29	4000



**Poly-all. Vandtæt stanghængsel med PU kerne og aluminium flanger. Tillader 180 gr. åbning. Stor styrke og høj elasticitet. Forboret med 5mm. huller i flange. Hulafstend : 200mm. Aluminium finish.**

Poliall continuous hinge

Poly-all

Vare nr.	B	L
	mm	mm
54.261700J	29	2400
54.261720J	29	2700
54.261740J	29	3000
54.261780J	29	4000



**Poly-all Sindby**

Poly-all Sindby continuous hinge