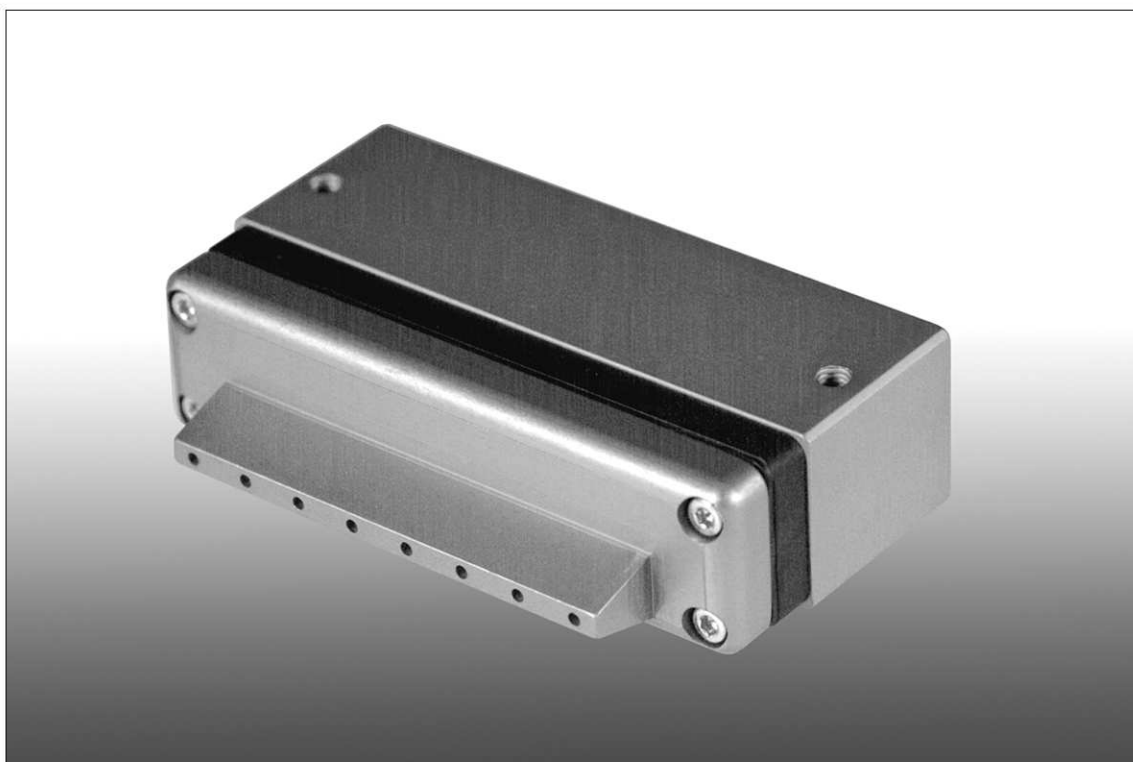


580 Series



High Performance solenoid multi-valve | 2/2 x 8
PNEUMATIC DIVISION

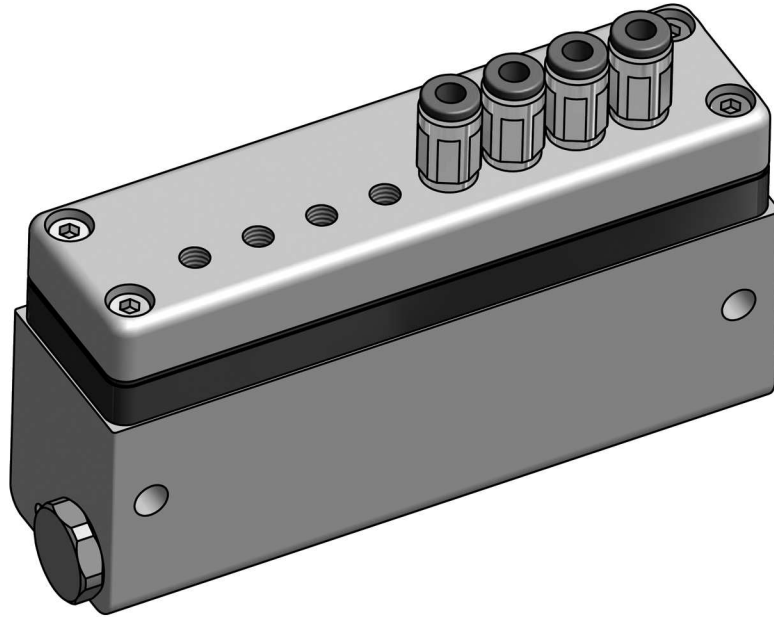
MATRIX
mechatronics

www.matrix.to.it
sales@matrix.to.it

The 580 Series solenoid multi-valves are 2/2 NC type.

The research about materials and new technological solutions allowed the realization of a shutter solenoid multi-valve with an extremely simple operation principle and with avant-garde dynamic characteristics. The mass of the moving elements has been reduced to the minimum and every internal friction has been eliminated: in this way, the 580 Series grants response times of milliseconds and an operating life of over 500 million cycles with a maximum operation frequency of 200 Hz.

Besides high-speed characteristics, the 580 Series offers flow rate values up to 180 NI/min. and is available both in-line configuration with push-in fittings and sub-plate versions for manifold installations.



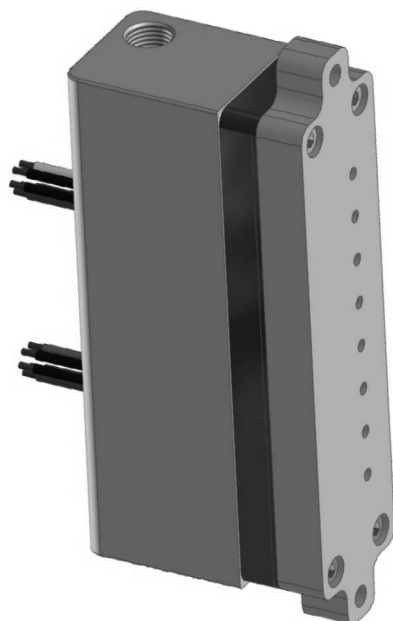
580 Series • Inline version with M5 threaded outlet interface and push-in fittings shown

Advantages

- Compact dimensions
- High flowrate up to 180 l/min x 8
- Fast response times
- Insensitivity to high frequency and vibrations
- Low power consumption
- Extreme precision and flexibility
- Extra long operating life (up to 500 M cycles)

Typical applications

- Process and precision instrumentation
- Pressure and flowrate control systems
- Positioning systems
- Sorting and recycling applications
- Metering systems
- Biomedical equipments



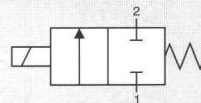
CONTROL:

DIRECT

PFM

PWM

N. 8 NC



GENERAL CHARACTERISTICS

FLUID	Non-lubricated dry air, neutral gases(-10 + 50°C)	
FILTRATION RATING	Min 40 micron	
TEMPERATURE	- 10 + 50°C (Standard version)	
RESPONSE TIME IN OPENING	KK < 1 ms	
RESPONSE TIME IN CLOSING	KK < 1 ms	
MAXIMUM FREQUENCY	KK 200 Hz	
WEIGHT	400 g	
PRODUCT LIFE EXPECTANCY	≥ 500 M/s cycles	
IP RATING	IP62	

IDENTIFICATION CODE

D	O	X	5	8	8	8	0	D	C	2	KK
---	---	---	---	---	---	---	---	---	---	---	----

● **OUTLETS**

8	8 Outlets
---	-----------

● **FLOW RATE**

O	180 NI/min

● **VERSION**

	Inline with push-in fittings (FKM flaps)
D	Manifold mounting (FKM flaps)

● **No. ELECTRICAL CONTROLS**

8	8 Controls

● **PORT CONNECTION**

0	Integrated cables IP 62 L = 500 mm
1	Integrated cables IP 62 L = 100 mm

● **FUNCTION**

C	NC
---	----

● **TYPE**

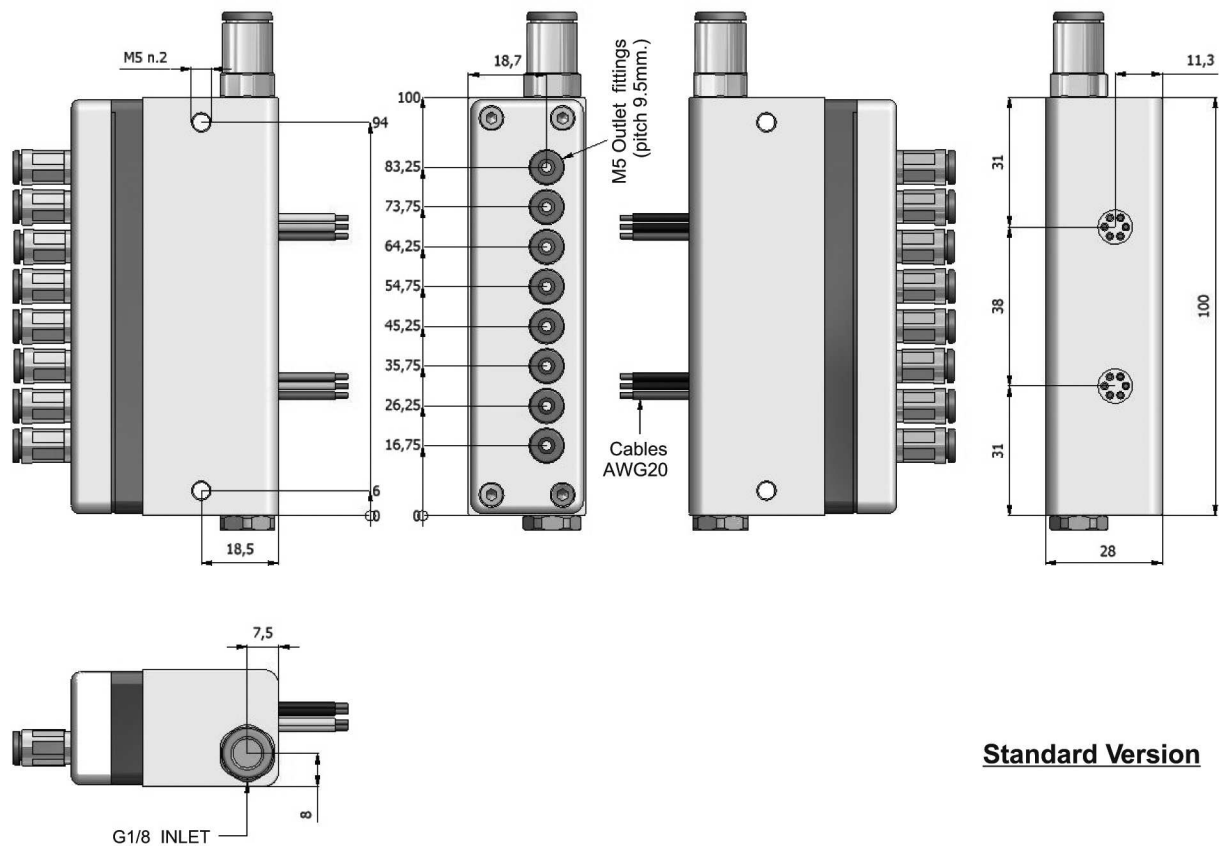
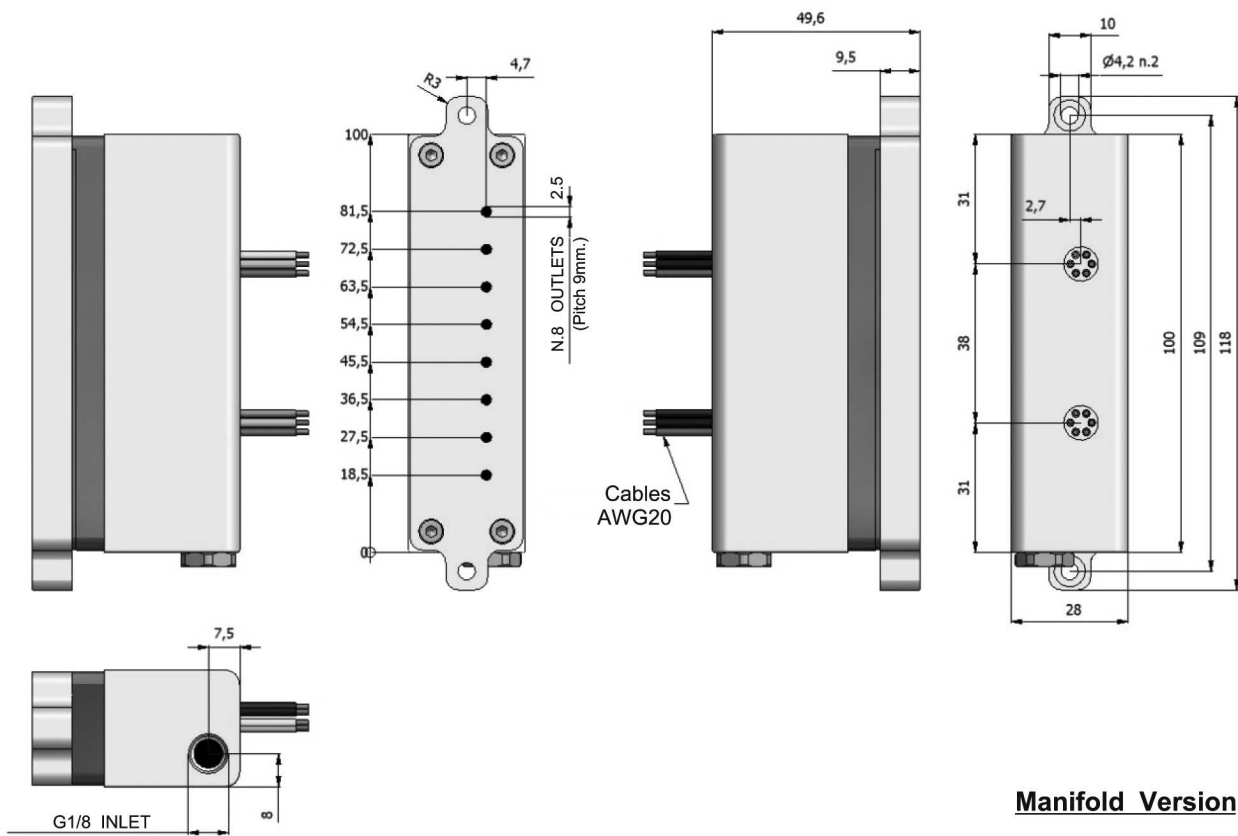
2	2/2
---	-----

● **CONTROL TENSION**

KK	Speed-up in tension (24 VDC)	1,6 W

● **OPERATING PRESSURE**

	RANGE	MODELS
D	0 - 5 bar	KK



CHARACTERISTICS OF THE ELECTRICAL CONTROL - MODELS KK

