

Bansbach
easylift

#ThisIsBansbach

Your expert for stainless steel in-line actuators!

Don't be afraid of demanding environments!

Our in-line actuators
can be used in harsh environment

Our stainless steel in-line actuators

Stainless steel in-line actuators are also a standard option on all our actuators (except easyE-25). Stainless steel is often used in industrial and marine applications. However, it is not limited to these.

Stainless steel actuators are suitable for environments where the applications are exposed to salt water or have special requirements, such as the food industry. High quality stainless steel (AISI 316) offers a high level of protection in environments exposed to seawater or industrial cleaning with chemicals, etc..

We use stainless steel (AISI 316) to manufacture our high quality stainless steel in-line actuators. These in-line actuators are not only water resistant, but are often used in food, chemical, medical and salt water applications. The Harsh Environment (HE) version is tested to IP68 and IP69 and meets the criteria for water resistance at 1m depth for one hour. These actuators are frequently used in maritime, food, medical and chemical applications and many other industries.



#WECANDOIT!

Features:

Materials:

Motor and actuator tube are stainless steel

Piston rod is stainless steel

Front and rear brackets are stainless steel

Protection class:

IP66 (standard), harsh environment (according to IP68 and IP69)

Max. static load/ Self locking force

easyE-35: 5400N

easyE-50: 16800N

easyE-60: 18100N

Depending on stroke length for push-applications

Stroke length:

50, 100, 150, 200, 250, 300, 350, 400, 500 and 750mm

Temperature:

Operation: -20°C to +70°C (easyE-35 and easyE-50) -20°C to +50°C (easyE-60)

Storage: -40°C to +70°C

Duty cycle: Max. 10% or 2 minutes in use followed by 18 minutes rest



Force/speed ratio

| Gear ratio | C*/5 | D/14 | E/19 | F/27 | G/51 | H/71 |
|--|------|------|------|------|------|-------|
| easyE-35 12/24VDC | | | | | | |
| Force 24V (dyn. push and pull) [N] | 120 | 400 | 600 | 900 | 1600 | 2200 |
| Speed at maximum load [mm/s] | 33 | 16 | 12 | 7,5 | 4 | 3 |
| Force 12V (dyn. push and pull) [N] | - | 400 | 600 | 900 | 1500 | 2000 |
| Speed at maximum load [mm/s] | - | 16 | 9 | 7,5 | 3,5 | 2,5 |
| Current at maximum load: 12VDC (max 14VDC) = 3,6A, 24VDC (max 28VDC) = 1,8A | | | | | | |
| Gear ratio | C*/4 | D/14 | E/17 | F/24 | G/49 | H/84 |
| easyE-50 12/24VDC | | | | | | |
| Force 24V (dyn. push and pull) [N] | 500 | 1750 | 2200 | 3100 | 4500 | 4500 |
| Speed at maximum load [mm/s] | 70 | 20 | 17 | 12 | 6 | 4 |
| Force 12V (dyn. push and pull) [N] | - | 1400 | 1700 | 2400 | 4500 | 4500 |
| Speed at maximum load [mm/s] | - | 14 | 10 | 6 | 3 | 3,5 |
| Current at maximum load: 12VDC (max 14VDC) = 16A (gear ratio C-F), 14A(G), 9A(H), 24VDC (max 28VDC) = 8A (C-F), 7A(G), 4,5A(H) | | | | | | |
| Gear ratio | - | D/19 | E/43 | F/66 | G/81 | H/100 |
| easyE-60 24VDC | | | | | | |
| Force 24V (dyn. push and pull) [N] | - | 1900 | 4300 | 6600 | 8100 | 10000 |
| Speed at maximum load [mm/s] | - | 26 | 12 | 8 | 6 | 5 |
| Current at maximum load: 24VDC = 10A | | | | | | |

Max. load limited for stroke > = 500mm: 1000N (easyE-35), 2000N (easyE-50),

Max. load limited for stroke > 400mm: 5000N (easyE-60)

*only 24V DC power supply

The flyer is subject to technical alterations and printing mistakes.

Bansbach easylift GmbH

Barbarossastraße 8
D-73547 Lorch

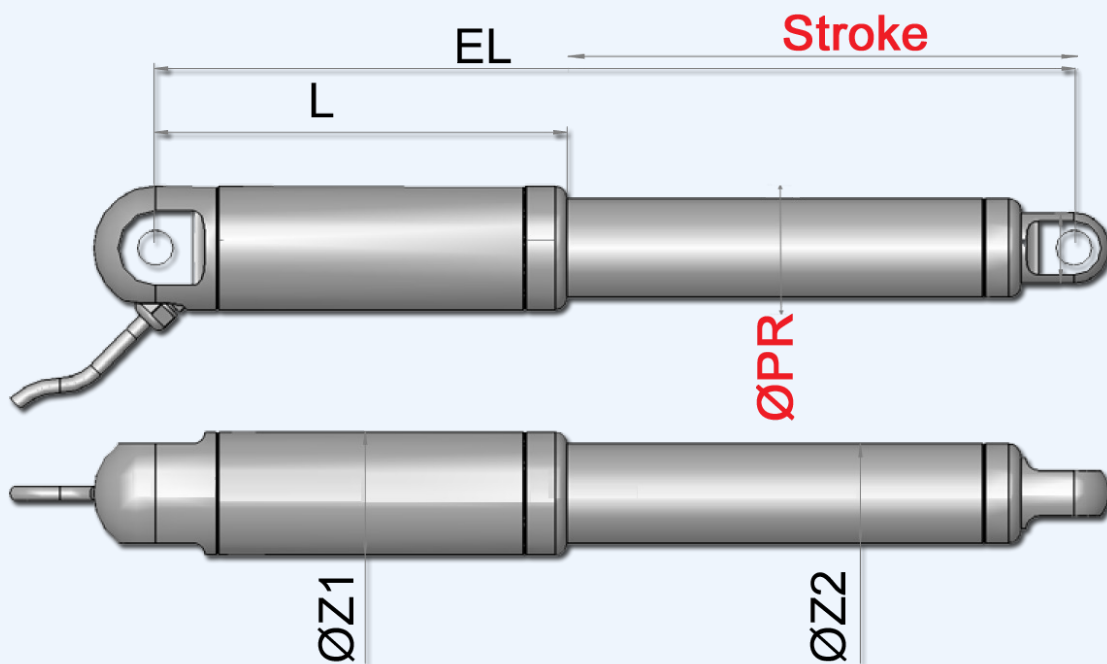
Tel. +49 (0) 7172/9107-0
Fax +49 (0) 7172/9107-44

info@bansbach.de
www.bansbach.de

Bansbach
easylift

#WECANDOIT!

Installation length



Axial backlash: +/- 0,5mm, generally length tolerance +/- 1mm

| | Installation length (EL mm) | ØZ1 | ØZ2 | ØKS | Clevis rear | Hall | UL/ EN60.601 | harsh environment |
|---|-----------------------------|-----|-----|-----|-------------|------|--------------|-------------------|
| easyE-35 Gear ratio: C/5, D/14, E/19, F/27 | stroke+160* | 35 | 28 | 20 | +10 | +10 | +10 | +11 |
| Gear ratio: G/51,H/71 | stroke+170* | | | | | | | |
| easyE-50 Gear ratio: C/4, D/14, E/17, F/24 | stroke+240** | 50 | 40 | 30 | - | +15 | +15 | +14 |
| Gear ratio: G/49,H/84 | stroke+255** | | | | | | | |
| easyE-60 Gear ratio: all ratios | stroke+358*** | 60 | 50 | 35 | - | +15 | - | +25 |

*If stroke > 400mm: EL+7mm, if stroke >700mm: EL+42mm

**If stroke > 750mm: EL+100mm (on request)

***If stroke > 400mm: EL+25mm (not Harsh-Environment-version)

The flyer is subject to technical alterations and printing mistakes.

Bansbach easylift GmbH

Barbarossastraße 8
D-73547 Lorch

Tel. +49 (0) 7172/9107-0
Fax +49 (0) 7172/9107-44

info@bansbach.de
www.bansbach.de

Bansbach
easylift

#WECANDOIT!

Under Water Actuators

easyE-35 / 35i & easyE-50 / 50i for submerged use

The Bansbach UW100-series of actuators are developed and tested for under water applications down to 100 m. The actuators come in stainless steel (AISI316) and have extra sealing to protect against the high water pressure.



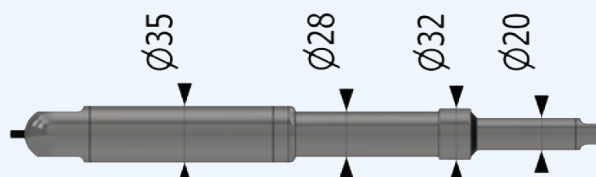
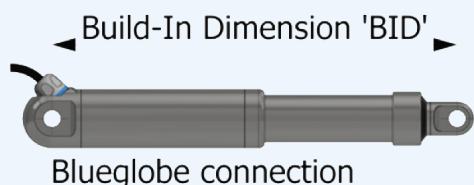
easyE-35/35i

| Speed and Force | E/19 | F/27 | G/51 | H/71 |
|---|------|------|------|------|
| easyE-35/35i <small>24VDC power supply (max. 28VDC), permanent magnet motor, 1,8ADC (2,5ADC for 35i)</small> | | | | |
| Force 24V (dyn. push and pull) [N] | 300 | 500 | 1300 | 1900 |
| Speed at maximum load [mm/s] | 12 | 7,5 | 4 | 3 |
| <small>12VDC power supply (max. 14VDC, permanent magnet motor, 3,6ADC (4,0ADC for 35i)</small> | | | | |
| Force 12V (dyn. push and pull) [N] | 300 | 500 | 1100 | 1900 |
| Speed at maximum load [mm/s] | 9 | 7,5 | 3,5 | 2,5 |
| <i>Maximum load is specified at 100 meter water pressure, higher forces can be expected at lower pressure</i> | | | | |

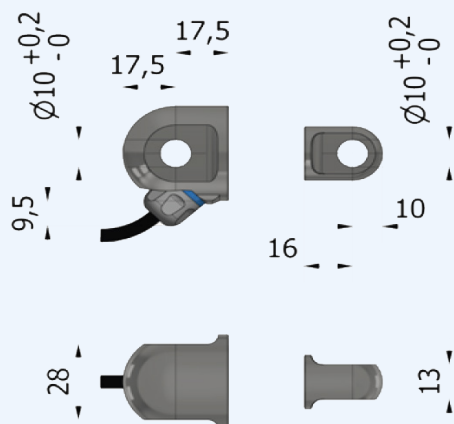
Stroke length is limited to max. 400mm. Hall sensor included in all models.

| Dimensions | Standard |
|-----------------------|--------------|
| Gear ratio E/19, F/27 | Stroke + 201 |
| Gear ratio G/51, H/71 | Stroke + 211 |

Axial backlash: +/- 0.5mm, General dimensional variation: +/- 1mm



Blueglobe



Stainless Steel
Max. statistic load: 5400N
Blueglobe connection

The flyer is subject to technical alterations and printing mistakes.

Bansbach easylift GmbH

Barbarossastraße 8
D-73547 Lorch

Tel. +49 (0) 7172/9107-0
Fax +49 (0) 7172/9107-44

info@bansbach.de
www.bansbach.de

Bansbach
easylift

#WECANDOIT!

Under Water Actuators

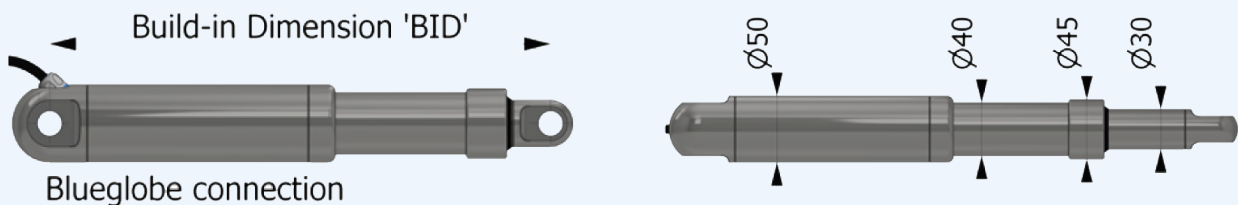
easyE-50/50i

| Gear ratio Speed and Force | D/14 | E/17 | F/24 | G/49 | H/84 |
|--|------|------|------|------|------|
| easyE-50/50i 24VDC power supply (max. 28VDC), permanent magnet motor, 14-24: 8ADC, 49: 7ADC, 84: 4,5ADC | | | | | |
| Force 24V (dyn. push and pull) [N] | 1050 | 1500 | 2400 | 3800 | 4500 |
| Geschwindigkeit bei max. Belastung [mm/s] | 20 | 17 | 12 | 6 | 4 |
| 12VDC power supply (max. 14VDC), permanent magnet motor, 14-24: 16ADC, 49: 14ADC, 84: 9ADC | | | | | |
| Force 12V (dyn. push and pull) [N] | 750 | 1200 | 1700 | 3800 | 4500 |
| Speed at maximum load [mm/s] | 14 | 10 | 6 | 3 | 3,5 |
| Maximum load is specified at 100 meter water pressure, higher forces can be expected at lower pressure | | | | | |

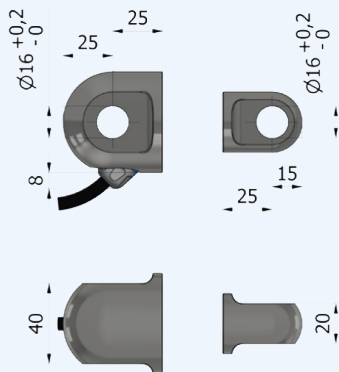
Stroke length is limited to max. 400mm. Hall sensor included in all models.

| Dimensions | Standard |
|-----------------------------|--------------|
| Gear ratio D/14, E/17, F/24 | Stroke + 291 |
| Gear ratio G/49, H/84 | Stroke +306 |

Axial backlash: +/- 0.5mm, General dimensional variation: +/- 1mm



Connector



Stainless steel
Max. statistic load: 16800N



Blueglobe gland



SubCom connector

General information

The water tightness covers the actuator including cable. Connector or open ends are not covered by this classification.

The flyer is subject to technical alterations and printing mistakes.

Bansbach easylift GmbH

Barbarossastraße 8
D-73547 Lorch

Tel. +49 (0) 7172/9107-0
Fax +49 (0) 7172/9107-44

info@bansbach.de
www.bansbach.de

